

ATOM - HOW TO INSTALL LPT CABLE TO MOTHERBOARD



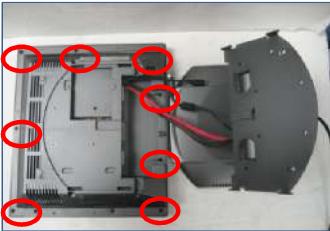
1. Unscrew I/O cover



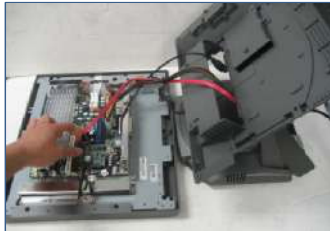
2. Remove I/O plastic cover and unplug all cables.



3. Unscrew two screw to remove unit from base stand.



4. Face system down and unscrew all screws.



5. Remove back housing from system.



6. Install LPT extension cable to connector on motherboard.

Note : Red line on LPT cable to pin 1 on motherboard.



7. Tie the LPT cable to the I/O metal with a white tie.

8. Finally close the back housing and reinstall everything back.

For further assistance:
PIONEERPOS INC.
909.468.9757
techsupport@pioneerpos.com